

Gold

CMP: 30498



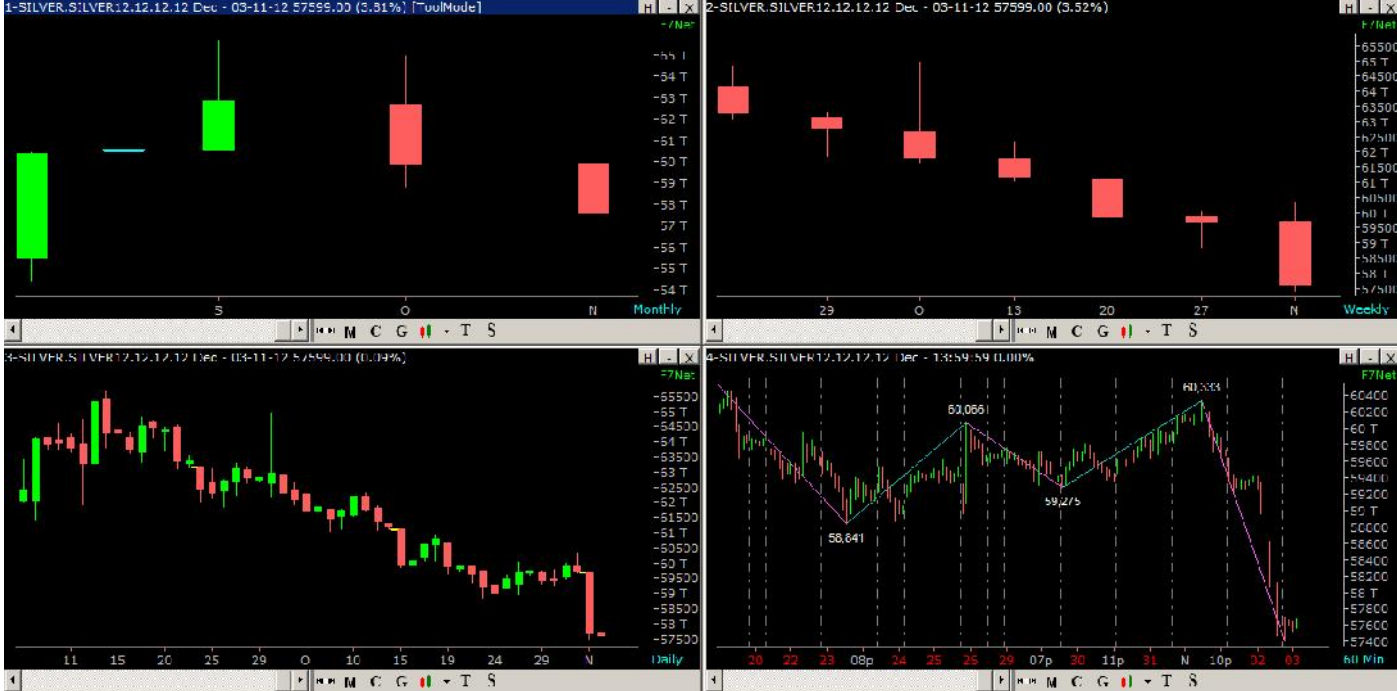
**Gold:** It has shown mandi in monthly, weekly, daily charts. It can bounce back to the level of 30800. But that point can be assumed as resistance to sell. Target can be 30100. Teji can be done only after it closes above 31160.

Silver

CMP: 57651

On monthly chart Silver has made lower bottom another month. Selling can be done in price range of 57288 to 59108. Lower side target is around 55600.

Weekly upside, we will not get to see much movement and would be 59108 only.



**COPPER** **CMP: 415.95**



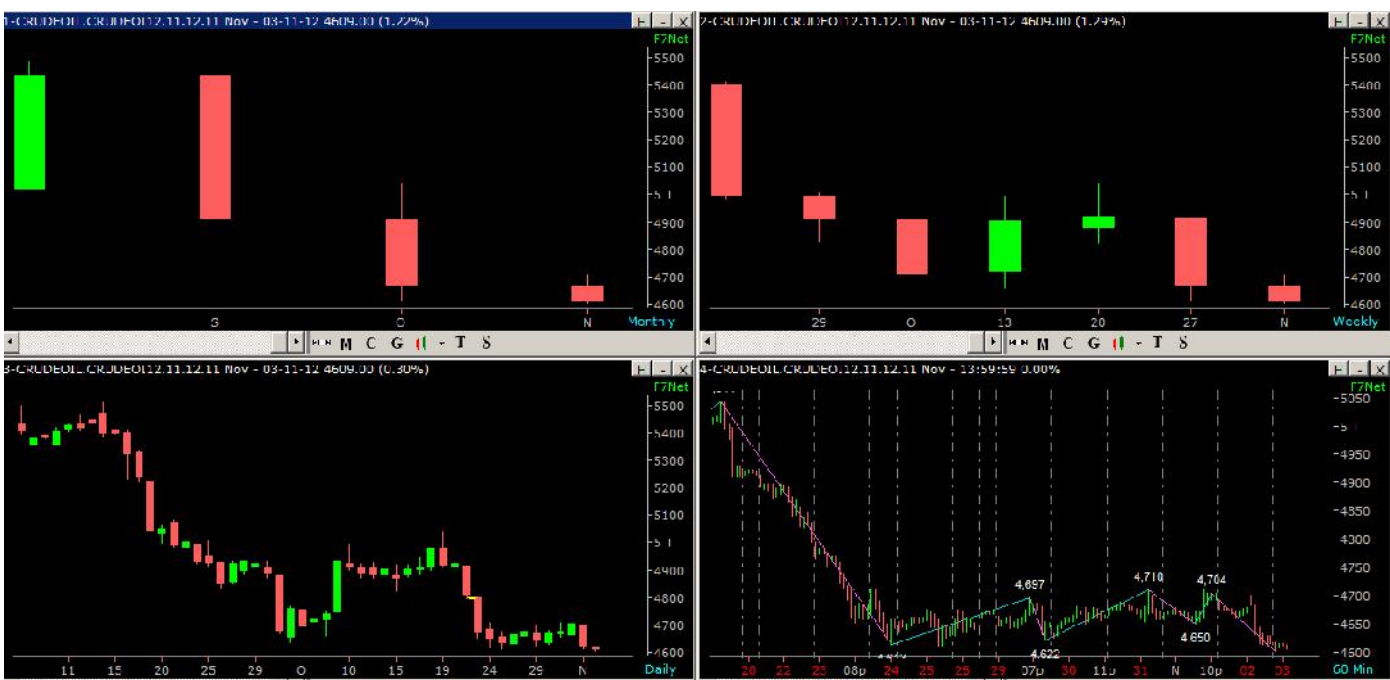
Copper is showing mandi. It has formed lower bottom in monthly as well as weekly chart. We expect it to taste 423 which will be a good level to sell copper. Stoploss can be around 426.5 as this level is working as a resistance.

Below 416 you may get to see 407.

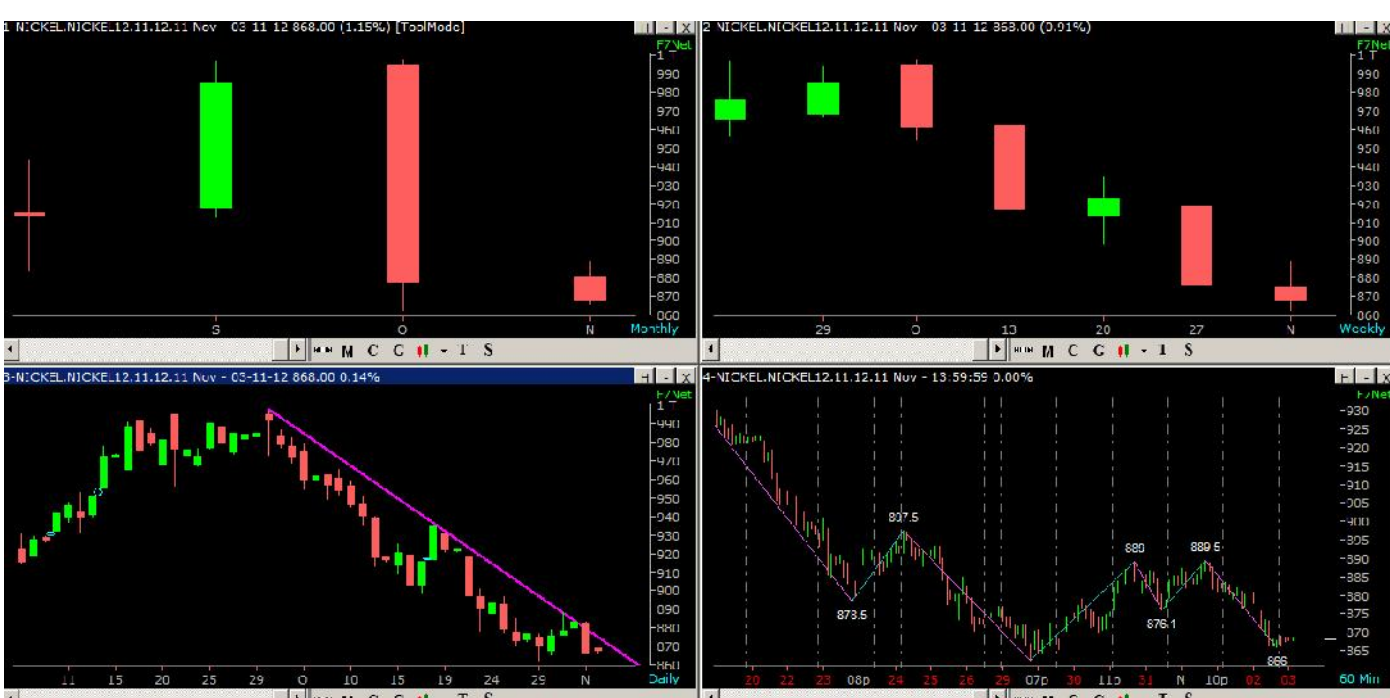
**Crude oil** **CMP: 4609**

Crude oil has range of 4600-4710.... We are going to get more downside in crude Below 4610. The level can be 4520 as outlook for Crude is Negative. Charts are weak. Selling can be done with stoploss of 4715

Only above 4711 we may get to see high of 4850...but before that maintain stoploss of 4715.



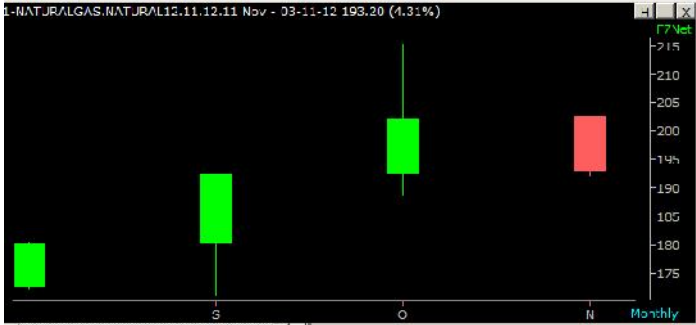
**NICKEL** **CMP: 868**



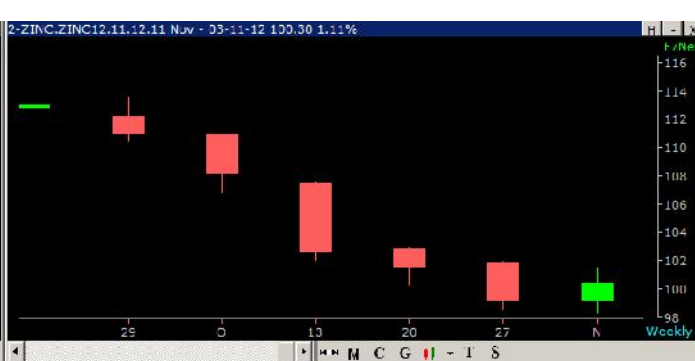
As mentioned in previous newsletter, we expect teji for target of 880. And after 880 we will get to see rally till 950. Buying can be done but has to maintain stoploss of 840. Another and very important support is 855 above 840. For current week we may get to see level of 913.

**Natural Gas** **CMP:192.8**

Natural gas was in teji. But now it has started making lower bottom. Current week it shows mandi. And It may come to the level of 182, 175. 182 is major support for natural gas. This is sell on rally commodity. Short term resistance is 194.1 which is even great opportunity to sell Natural gas.



**ZINC** **CMP:100.10**

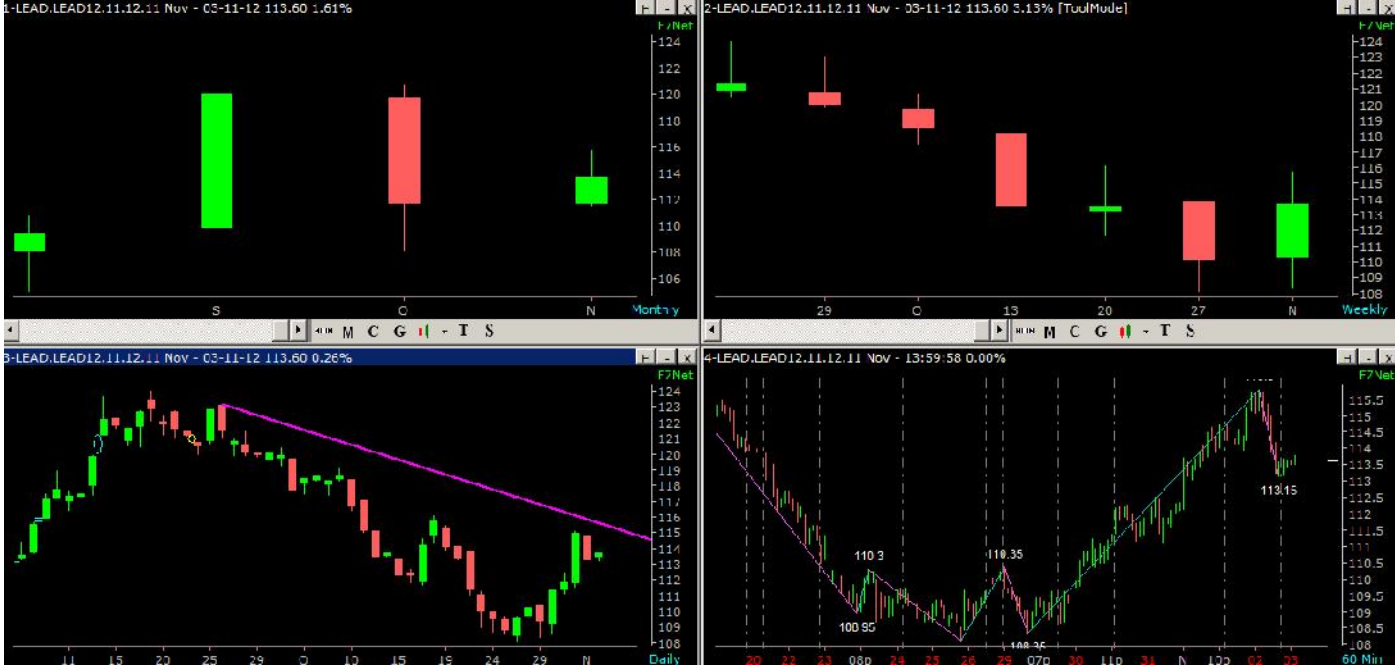


If Zinc starts to trade above 102 we expect a target of 107. But to sell only with stoploss of 102.1 and below 100 we find good support around 98 and 95 zone. So current week be in mandi only with stoploss on upperside target upto 105 possible.

**LEAD** **CMP:113.30**

Lead has formed lower top lower bottom formation. So outlook is mandi. To sell maintain stoploss of 117.

On pull back it should be sold with target of 108.0



**OUTLOOK AND TARGET**

**MCX**

ScripName	Low 1	Low	High	High1	Close	Red	Green
ALUMINIUM.ALUMINI12.11.1	100.87	103	105.05	107.53	104.2	1	0
CARDAMOM.CARDAMO12.11.12	664.62	778	838.6	867.18	765.9	1	0
COPPER.COPPER12.11.12.11	405.26	411.85	429.15	428.64	416.95	1	0
CPO.CPO12.11.12.11 Nov	403.57	425.1	444.8	453.43	428.5	0	1
CRUDEOIL.CRUDEOI12.11.12	4373.42	4410	4903	4844.58	4609	1	0
GOLD.GOLD12.12.12.12 Dec	29898.6	30734	30791	31097.4	30498	1	0
LEAD.LEAD12.11.12.11 Nov	109.4	110.1	114.05	117.8	113.6	1	0
MENTHAOIL.MENTHAO12.11.1	1102.09	1153.7	1237.7	1247.91	1175	0	1
NATURALGAS.NATURAL12.11.	179.16	196.7	205.4	207.24	193.2	1	0
NICKEL.NICKEL12.11.12.11	833.07	837.8	913.9	902.93	868	1	0
SILVER.SILVER12.12.12.12	55728.46	59108	58625	59469.54	57599	1	0
ZINC.ZINC12.11.12.11 Nov	96.95	98.05	101.75	103.65	100.3	1	0

**NCDEX**

ScripName	Low 1	Low	High	High1	Close	Red	Green
BARLEYJPR.BARLEY.12.11 N	1225.31	1260.5	1339.5	1374.69	1300	0	1
CASTORSEED.CASTOR SEED N	3004.76	3074	3780	3849.24	3427	1	0
CHARJDEL.CHANA.12.11 No	4255.19	4155	4857	4756.81	4506	1	0
CHLL334GTR.RED_CHILLI.12	4645.85	4724	5152	5230.15	4938	1	0
COCUDAKL.COTTON SEED OIL	1329.33	1372	1494	1536.67	1433	0	1
DHANIYA.CORIANDER.12.11	3926.62	4014	4568	4655.38	4291	1	0
JEERAUNJHA.JEERA.12.11 N	13285.69	13575.5	14770.5	15060.31	14173	1	0
PPRMLGKOC.PEPPER.12.11 N	41277.22	40560	44710	43992.78	42635	1	0
RMSEED.RAPE_MUSTARD_SEED	3876.35	3826	4354	4303.65	4090	1	0
SUGARM200.SUGARM200.12.1	3291.48	3308	3492	3508.52	3400	0	1
SYBEANIDR.SOYABEAN.12.11	3051.83	3103	3449	3500.17	3276	1	0
SYOREFIDR.SOYA_OIL.12.11	633.75	626.35	705.65	698.25	666	1	0
TMCFGZNZM.TURMERIC.12.11	4775.38	4904	5404	5532.62	5154	0	1

How to analyse:

If the mark 1 is in red column then we expect LOW and LOW 1 target to be achieved and if 1 is in Green column then we expect high and high 1 target to be achieved.

**Disclaimer:**

This document is not for public distribution and is meant solely for the personal information of the authorised recipient. This document does not constitute an investment advice or an offer to sell or solicitation of an offer to buy / sell any security and is not intended for distribution in countries where distribution of such material is subject to any licensing, registration or other legal requirements.

The information, opinion, views contained in this document are as per prevailing conditions and are of the date of appearing on this material only and are subject to change. Past performance is no guarantee and does not indicate or guide to future performance.

The contents in this document are intended for general information purposes only. This document or information mentioned therefore should not form the basis of and should not be relied upon in connection with making any investment. The recipients should therefore obtain your own professional, legal, tax and financial advice and assessment of their risk profile and financial condition before considering any decision.